

Home & Land Package

THE OUTLOOK



rivergum
homes

Kingsford 240

By Rivergum

 3  2  2

Lot 505 Saunders Close, Bluestone, Mt Barker

Ideal for the family that likes to entertain, Rivergum's Kingsford 240 design offers an open plan living, meals, and kitchen area that overlooks the outdoor alfresco.

With 3 bedrooms, master with robes and ensuite, study, double garage, and ducted reverse cycle air-conditioning, this fixed price package is affordable living for the family.

Visit the Bluestone Land Sales Centre
(Open Daily 10am - 5pm)
Builders Display Village
Greenfield Street, Mount Barker
UBD Ref 172 N15

Land 675sqm | Home 239.17sqm

\$442,768*

FIXED PRICE!
**FREE upgrade to 2.7m
ceiling height!****

FEATURES

- 3 bedrooms
- Ensuite & WIR
- Study
- Open plan living
- Double garage

1800 790 700
bluestonemtbarke.com.au


BLUESTONE
MT BARKER


Walker

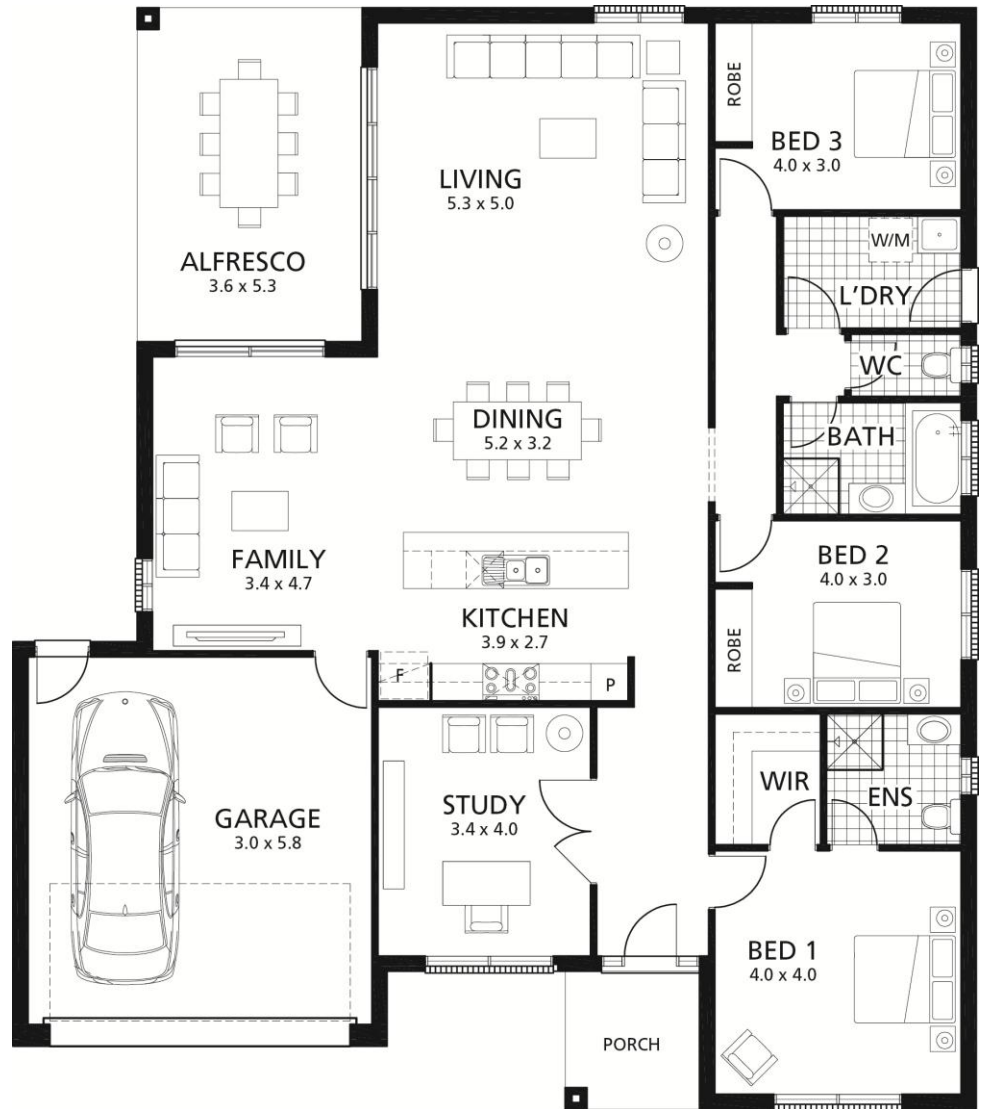
AREAS

Home

Living	178.61m ²
Garage	36.59m ²
Alfresco	19.22m ²
Porch	4.75m ²
TOTAL	239.17m²

Land

Size	675m ²
Frontage	19.29m



For further information please contact:

Bluestone Land Sales Centre

1800 790 700

sales@bluestonemtbarke.com.au

* Conditions apply. Certain elevations may not match the particular floor plan published in this package, as such all floor plans and elevations are for illustration purposes only. Land subject to availability. Not valid with any other offer, price may change without notice. Unauthorised use of this plan constitutes a breach of copyright which will make you personally liable for damages. ** 2.7m ceiling height available until 31 March 2012.